

ADVANCE7 | windows & doors

casement windows, single leaf and french doors



 **SELECTA**
SYSTEMS

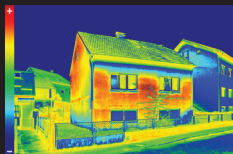
The ADVANCE 70 chamfered and sculptured profile system offers a 70mm frame depth and is extruded at our Birmingham headquarters in the heart of the UK, using lead-free PVCu material.

The chamfered 1700 system gives a modern look where-as the curved frame and sash on the 1800 sculptured system provides a softer appearance.

Our partnership with one of the leading and most recognised home security brands, Yale, means that the ADVANCE 70 system can utilise the benefits of high security multi-point locking systems for enhanced security. Therefore, PAS 24, Secured by Design (SBD) and Document Q compliant window and door options are available for new build and commercial projects.

Fabrication and fitter friendly, the fully integrated ADVANCE 70 Window and Door System provides great versatility for fabricators, installers, homeowners and specifiers.

THERMALLY EFFICIENT



Five chambered system for greater thermal efficiency

ENHANCED SECURITY



PAS 24, SBD and Doc Q compliant window and door profile system

EXCELLENT PERFORMANCE



Recycled Thermal Reinforcement (RTR Bar) for increased thermal performance or steel reinforcement for added structural strength

INNOVATIVE DESIGN



A full depth central eurogroove helps to make windows and doors more secure

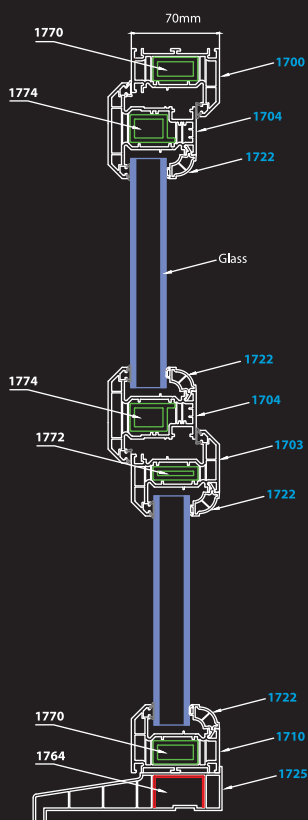
PURE ELEGANCE



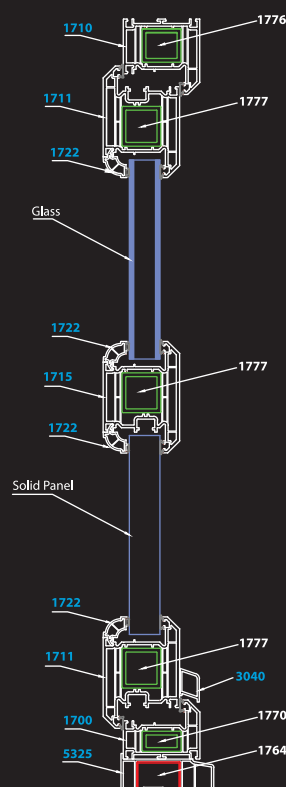
A sculptured design for a softer finish or a chamfered edge for a modern look

Drawings

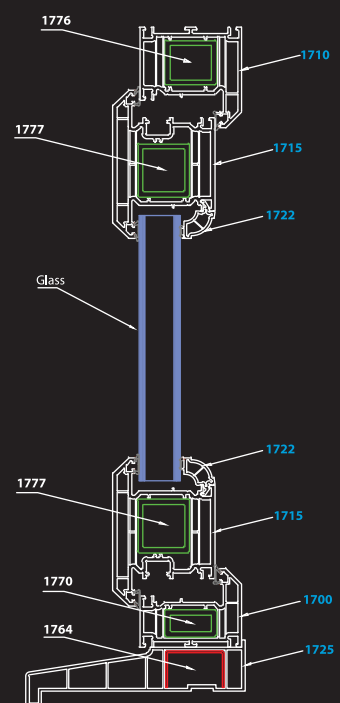
Casement Windows



Residential Doors



French Doors



THE VERSATILE PVCu WINDOW & DOOR SYSTEM

The ADVANCE 70 Chamfered and Sculptured PVCu Window and Door Profile System

Windows & Doors

A comprehensive range of window and door options

- Chamfered or Sculptured option
- Secured by Design, PAS 24 and Doc Q compliant for enhanced security
- 17 colour options & 34 colour ways
- Five chambers for greater thermal efficiency
- RTR Bar (Recycled Thermal Reinforcement) for increased thermal performance
- Full depth eurogroove
- Single leg bead for easy installation



Energy Efficiency

The thermal performance of the multi-chambered ADVANCE 70 Window and Door Systems ensures that A+ energy ratings can be achieved. Some examples shown below:

U 1.2 W/(m²K)	6 / 16 / 6 Pilkington Optifloat / Argon / Optitherm S1+ / Thermobar / RTR Bar Reinforcement
U 1.2 W/(m²K)	6 / 16 / 6.6 Pilkington Optitherm S1+ / Argon / Optilam S1+ / Thermobar / RTR Bar Reinforcement
U 1.0 W/(m²K)	4 / 14 / 4 / 14 / 4 St.Gobain Planitherm Total + / 90% Argon / Float Outer Pane / St. Gobain Planiclear / Superspacer Premium Spacer Bar with 5mm Hot Melt

Weather Performance

The ADVANCE 70 Window System is at the cutting edge of modern design and technology to ensure excellent weather resistant performance.

These innovations in modern PVCu design not only protects the property from inclement weather conditions, they also increase the lifespan of windows and doors.

Weather Test Results

		Top Hung Casement (L) 1300mm x (H) 400mm Side Hung Casement (L) 600mm x (H) 1200mm Fixed Windows Part Reinforced (L) 1550mm x (H) 1550mm Multilight Windows, RTR or Steel Transom / Mullion Reinforcement (L) 1908mm x (H) 1330mm	
		Single Leaf and French Door Set	
Size Tested	(L) 1800mm x (H) 2100mm	Air Permeability Classification	3
Water Tightness Classification	3A	Water Tightness Classification	9A 600 Pa
Resistance to Wind Resistance	A3	Resistance to Wind Resistance	A5
Exposure Category In Accordance with BS 6375 Part 1	1200 Pa	Exposure Category In Accordance with BS 6375 Part 1	2000 Pa

Colour Options

An attractive range of 17 foiled colours and woodgrain effects are available for the ADVANCE 70 System

standard collection



premium collection





SYSTEMS
COMPANY



#bepartofthefamily



0121 325 2100

| info@selectasystems.com

| www.selectasystems.com



@SelectaSystems



/selectasystemsLtd



/selectasystemsLtd



/selectasystemsLtd



SelectaTV

ADVSTS01-05/23